



INSPECTIONS & CONSULTING S.r.l.

SEDE AMMINISTRATIVA - OPERATIVA

Via Rossini, 12 – 34132 Trieste - ITALY

Tel. +39 040 761518 - Fax +39 040 3720839 - e-mail: amm@incots.com - www.incots.com

SEDE LEGALE - LABORATORIO R&S

Loc. Dolina 544/1 (Z.A.) – 34018 San Dorligo della Valle (TS) – ITALY - www.incoal.it

INSPECTIONS & CONSULTING S.r.l.

- Inspections & Expediting Services -



We develop services tailored to our client's need

Company Register n.112526/1998 – CF/P.IVA 00941640328 - Certified ISO 9001:2008, ICIM cert. n. 2149

Accreditation ISO/IEC 17025:2005, ACCREDIA cert. n. 0503 – per l'elenco prove accreditate: www.accredia.it

Index

1. The Company	Page 3
1.1 The Structure of Inspections & Consulting S.r.l.	Page 4
1.2 The Philosophy of Inspections & Consulting S.r.l.	Page 5
2. Inspections & Expediting Services	Page 6
2.1 On Site Inspections	Page 6
2.2 Shipment	Page 7
2.3 Documentation and Qualification	Page 7
2.4 Expediting Services	Page 7
3. Main material inspected	Page 8
4. References of Main Projects	Page 9
5. IN.CO. S.r.l. Network	Page 11

1. THE COMPANY

INSPECTIONS & CONSULTING S.r.l. (IN.CO. S.r.l.) provides inspection, expediting and quality control services all over the world on a wide range of products, goods and commodities in the industrial and Oil & Gas field, operating on behalf of the client or as third party inspector at the premises of manufacturers and sub-contractors.

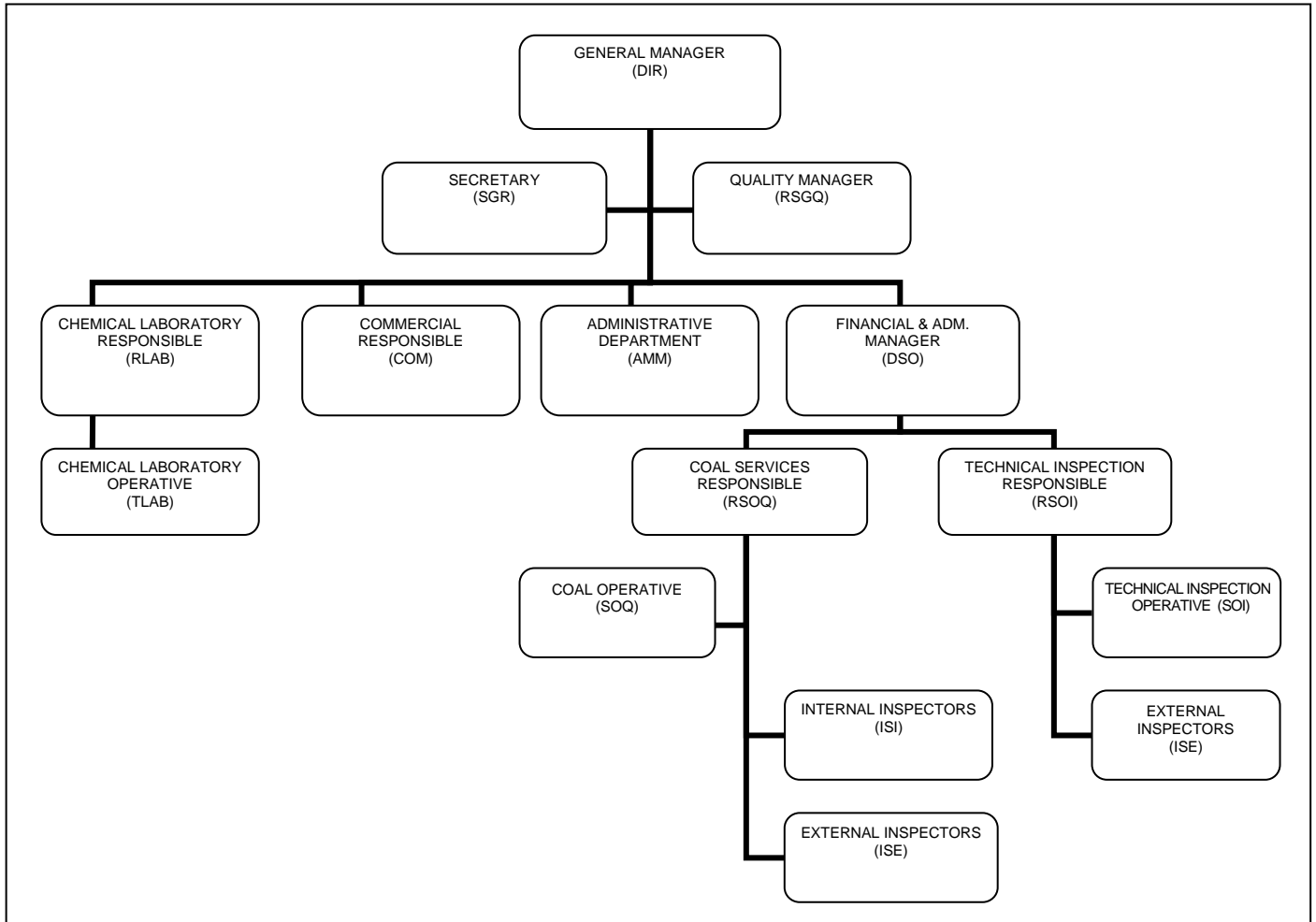
The company was established in January 1998 on the solid knowledge and expertise of highly qualified and skilled Italian personnel, supported by a network of companies and freelancers in Europe and in North America.

Today IN.CO. S.r.l. has extended its experienced and professional services all over the world: IN.CO. S.r.l. guarantees that projects are completed on time and meet all the relevant quality standards and contractual requirements, offering always the most valuable and reliable support as customer satisfaction is our top priority.

IN.CO. S.r.l. head office is based in Trieste, in the North-East of Italy: thanks to its strategic location, our company operates throughout Italy, Austria, Slovenia and Croatia and is also active in the emerging market of East Europe.

Furthermore, the company is associated to a broad network of international companies, including 10 chemical laboratories, operating in 50 countries all over the world, in particular in Europe and in North America.

1.1 THE STRUCTURE OF INSPECTIONS & CONSULTING S.r.l.



Name of the company	INSPECTIONS & CONSULTING S.r.l.
Initials	IN.CO. S.r.l.
Date of establishment	January 1998
Juridical form	S.r.l.
Chamber of Commerce no.	00941640328 (CCIA – Trieste)
Registered Capital	80.000,00 Euro
Address	Via G. Rossini, 12 – 34132 - Trieste - Italy
E-mail Address	tech@incots.com
Phone No.	(39) 040 761518
Fax No.	(39) 040 3720839
Insurance policy No.	25173
Insurance company	Reale Mutua Assicurazioni
Bank	Friuliadria Crédit Agricole - Trieste, Italy

1.2 THE PHILOSOPHY OF INSPECTIONS & CONSULTING S.r.l.

"WE DEVELOP SERVICES TAILORED TO OUR CLIENT'S NEED"

This is the expression of our philosophy, which is meant to offer the most valuable services developed case by case: the technical and procedural approach of IN.CO. S.r.l. is specifically customized to the different situations and to the instructions received for each assignment. The client is not only a job reference number: the friendly approach our staff is almost as well known as the quality of the services provided.

The company is supported by a dynamic structural organization, allowing IN.CO. S.r.l. to offer always dedicated and high quality services all over the world.

All stages of the interventions are carried out with individual and accurate care and are carefully followed at site by local personnel.

Furthermore, precise and prompt updating keeps always the client informed about the progress of each project and, thanks to the flexible structure of IN.CO. S.r.l., every question can find an immediate and direct answer in case of need.

- IN.CO. S.r.l. is certified according to ISO 9001:2008 since 2001;
- IN.CO. S.r.l. is a member of EMA (Expediting Management Association) since March 2001;
- IN.CO. S.r.l. meets all the quality requirements of IFIA (International Federation of Inspection Agencies).

2. INSPECTIONS & EXPEDITING SERVICES

Inspections & Consulting S.r.l. provides quality control, inspection and expediting services in the industrial field on products, equipments and plants, operating on behalf of the client or as third party inspector at the premises of manufacturers and/or sub-contractors.

in addition, IN.CO. S.r.l. offers also a complete and accurate consulting service, which has been created to help our customers to better understand all tests and inspections results, including a technical evaluation of all stages of the activities performed.

To follow, a list of the main services provided by IN.CO. S.r.l.:

2.1 Manufacturer Inspections

- Visit to the premises of vendors and/or related sub-contractors to verify the activities marked as spot witness, witness or hold on the Inspection Test Plan;
- Attendance of Pre Inspection/Manufacturing Meetings;
- Inspection of all stages of manufacturing activities (initial visits, in progress and final inspections);
- Witnessing of non-destructive tests;
- Supervision of mechanical tests such as hydrostatic test, pneumatic test, leakage test, running test, type test and routine test, performance test, PMI, hardness test, air flow test, hammer test, air flow test, PWHT, Cryogenic test and so on;
- Visual, dimensional and quantity control of goods/commodities;
- Painting check;
- Welding, coating and lining inspections;
- Verification of production schedule and delivery dates;

2.2 Shipment:

- Cleaning check (material cleanliness examination and/or external surface preparation);
- Final release inspection for shipment;
- Packing and Marking inspection;
- Packing documentation review and issuance of Release Notes;
- Pre-shipment inspection;
- Monitoring during transportation and shipping of goods;
- Inspection of Packing and Making;

2.3 Documentation and Qualification

- Review of test/inspection certificates;
- Review of material certificates (chemical analysis, mechanical properties);
- Verification of Manufacturer Data Books;
- Review of QCP/ITP;
- Support for the creation of quality assurance programs;
- Examination of vendor technical documentation, procedures and data sheets to verify the compliance with project specification and national/international standards.

2.4 Expediting Services

- Monitoring of material dispatch;
- Field Expediting Visits and Desk Expediting;
- Evaluation of job status in the view of the overall project and suggestion of possible improvements/corrections;
- Expediting Reports.

3. MAIN MATERIALS INSPECTED

Base Materials

- Castings
- Forgings
- Plates
- Structural Steel

Coatings

- Lining
- Painting
- Zinc coating

Components & Equipments

- Actuators
- Adapters
- Adsorbers
- Catalyst Tubes
- Control Heads
- Filters
- Instrumentation
- Manifolds
- Risers & Downcomers
- Seal assemblies
- Spools
- Stabilizers
- Testers
- Welding

Electrical Equipment

- Cables
- Control Panels
- Electrical Motors
- Generators
- High and low voltage electrical installations
- Relays
- Switches

- Transformers
- Wires

Flanges & Fittings

- Compensation Bends
- Expansion Bends
- Expansion Joints
- Flanges
- Insulation Joints
- Reducers

Goods for exploration, production and transport of Gas & Oil

- Casing
- Drill Pipes,
- Line Pipes
- Tubing

Piping Material

- Bolting
- Bulk piping
- Expansion Joints
- Gasket and Jointing
- Pipe - Fabrication Spools
- Pipe Supports
- Process Piping

Pressure Retaining, Heat Transfer and

Process Equipment

- Blowers
- Boilers
- Burners
- Cold Collector
- Condenser

- Coolers
- Cooling Towers
- Dampers
- Fans
- Fired Heaters
- Flares Stacks
- Furnaces
- Heat Exchangers
- Heaters
- Nozzles
- Pressure Vessels
- Pumps
- Reactors
- Refrigeration Packages
- Tanks
- Waste Heat Recovery

Rotating Machinery

- Blower
- Compressors
- Diesel Engines
- Fans
- Gears
- Generators
- Motors
- Pumps
- Turbines (gas, steam)

Valves

- Ball Valves
- Butterfly Valves
- Check Valves
- Gate Valves
- Globe Valves
- Plug Valves
- Relief Valves
- Wafer Valves

4. REFERENCES OF MAIN PROJECTS:

- Acetic Acid Project (Yanbu, Saudi Arabia) – **Sabic, Saudi Arabia**
- Centro Oli Val d’Agri (Basilicata, Italy) – **AGIP, Italy**
- Corinth Refinery Expansion project - **Motor Oil Hellas, Greece**
- Dolphin Project - HIGH SPEED MOTOR + spare parts - **Hitachi Plant Technologies, Japan**
- El Isba-Phase III compressors plant – **AFPC, Syria**
- Enhancement of Rhourde El-Baguel Oilfield (Algeria) - **M.W. Kellogg Eng. Co., USA**
- Ethylene Plant (Beijn, China) – **CNTC, China**
- Ethylene Plant (Brindisi, Italy) – **ENICHEM, Italy**
- Hamaca Crude Oil Upgrader Project (Jose industrial complex, Venezuela) - **Petrolera Ameriven, Venezuela**
- Indonesia Steel Mill construction – **Danieli, Italy**
- IPSA Phase II Pipeline Crude oil pumping stations & terminal marine turbo generator station – **SAIPEM, Saudi Arabia**
- Mexilhão Project - Platform Jacket - Pmxl-1 Tubulars Fabrication – **Petrobras, Brasil**
- Naphtha Reformer Complex (Alexandria, Egypt) - **A.P.C., Egypt**
- North Sumatra LPG Plant - Pertamina (Indonesia) - **Japan Gasoline Corporation, Japan**
- Pearl GTL Project, FGP Works in RAS LAFFAN QATA - **CHIYODA CORPORATION, JAPAN**
- PNG-LNG Plant Project (Papua New Guinea) - **CJJV (Chiyoda-JGC Joint Venture), Japan**
- PTA Plant (Geel, Belgium) - **AMOCO, BELGIUM**

- QATARGAS project 3 & 4 - train 6 and 7 - QCS onshore / onplot NGL expansion project – RAS LAFFAN QATAR – **CTJV (Chiyoda-Technip Joint Venture), France and Japan**
- QATARGAS project phase II- train 4 and 5 - QGII onshore NGL expansion project – RAS LAFFAN QATAR - **CTJV (Chiyoda-Technip Joint Venture), France and Japan**
- RAS GAS project phase II - train 6 and 7 - RGX 6&7 on shore / on plot NGL expansion project– RAS LAFFAN QATAR - **CTJV (Chiyoda-Technip Joint Venture), France and Japan**
- Rebuilding of Damaged facility at GC 15 and BS 130 (Kuwait) - **Fluor Daniel Engineering Company, USA**
- Refurbishment and increase of Diesel Treatment Units of UHDT II - Petrobras/Alberto Pasqualini-Refap S.A. – **Petrobras, Brasil**
- Riyadh Refinery Complex, Abqaiq-Maintain Gas Compression Capacity and Haradh Gas Plant - **SAUDI ARAMCO, Saudi Arabia**
- S1 and S2 compressor station for Iranian gas-line (Iran) - **Daelim Engineering and Construction, Korea**
- Sincor Downstream Project (Jose industrial complex, Venezuela) – **Consortio Contrina, Venezuela**
- South Hook LNG Project - BOG compressors - **ISHIKAWAJIMA – HI Co. Ltd, Japan**
- Tabangao Refinery (Philippines) - **Shell, Philippines**
- TAMOIL Petroleum Refinery in Collombey (Switzerland) and Cremona (Italy) - **Foster Wheeler Italiana, Italy**
- Various Locations - expediting activities - **Babcock Engineering, Canada**

5. IN.CO. S.r.l. NETWORK

Head Office

Via Rossini, 12
34132 Trieste – ITALY
Tel. +39 040 761518
Fax +39 040 3720839

R&D Laboratory

Località Dolina 544/1 (Zona Artigianale)
San Dorligo della Valle, 34018 (TS) ITALY
Tel. +39 040 8325198
Fax +39 040 3720839

Commercial information:

Mr. Franco Valencak
General Manager
fv@incots.com

R&D Laboratory:

Dr. Paola Bordon
Head of Chemical Laboratory
lab@incots.com

Inspections & Expediting Services:

Ms. Valentina Vidmar
Services coordinator
tech@incots.com

Coal Department:

Mr. Nicola de Lauro
Head of Coal Services
coal@incots.com

Web Sites:

<http://www.incots.com>

<http://www.incoal.it>

IN.CO. S.r.l. NETWORK IN ITALY (including an area of 200 km from the cities listed below):

Alessandria; Bari; Bergamo; Brescia; Chieti; Ferrara; Florence, Foggia, Genoa; Gorizia; Livorno; Lucca; Milan; Padua; Pavia; Pesaro; Pistoia; Salerno; Taranto; Terni; Trento; Trieste; Udine; Varese; Venice.

IN.CO. S.r.l. NETWORK WORLDWIDE:

Austria; Brazil; Croatia; Czech Republic; France; Germany; Japan; Poland; Portugal; Romania; Slovenia; South Korea; Spain; Switzerland; Thailand; The Netherlands; United Kingdom; USA.